

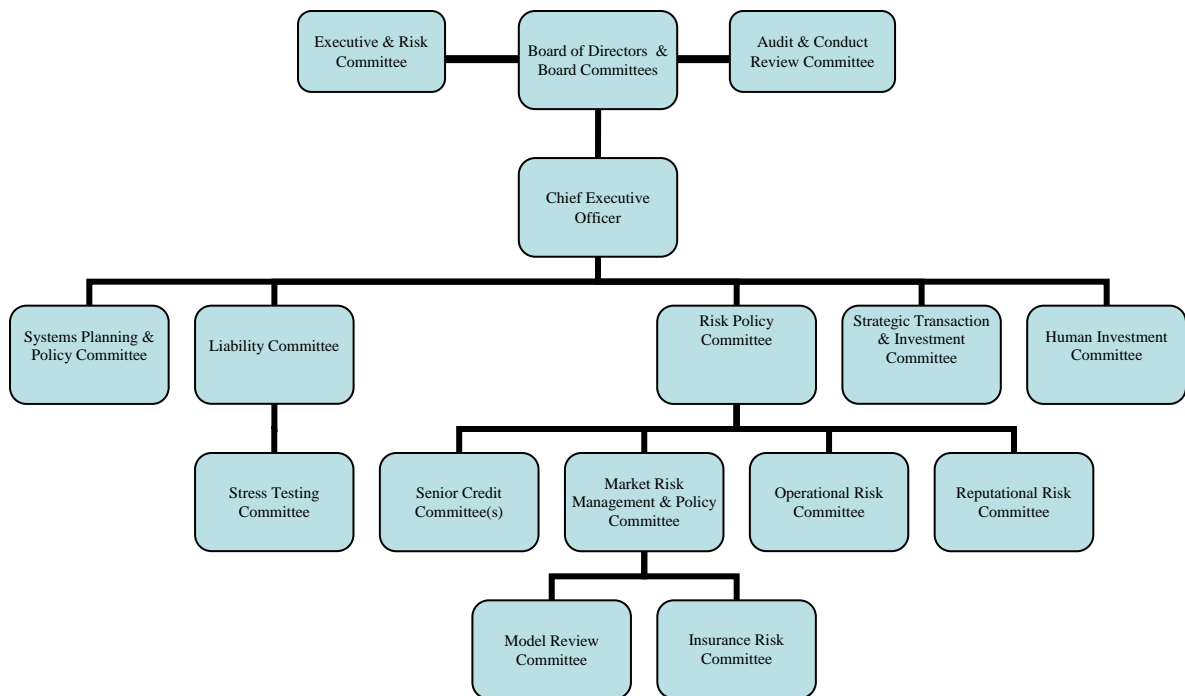
BASEL III DISCLOSURES OF THE INDIA BRANCHES FOR THE YEAR ENDED MARCH 31, 2017.

A. DF -1 : Scope of Application

Qualitative Disclosures

The new capital adequacy framework applies to The Bank of Nova Scotia, India Branches ('The Bank').

The risk management framework of Indian operations is integrated with the Bank's strategy and business planning processes at global level. The Bank has comprehensive risk management framework to monitor, evaluate and manage the principal risks assumed in conducting its activities. The risk management function in India is as per directives and framework set out at Head Office level using a committee structure as outlined below:



As at March 31, 2017, the Bank does not have any investment in subsidiaries/Joint Ventures and Associates.

B. Capital Structure:

Qualitative Disclosures

Bank regulatory capital consists of two components – Tier 1 capital and Tier 2 capital. Both components of capital provide support for banking operations and protect depositors. As per Reserve Bank of India (RBI) guidelines, the composition of capital instruments for foreign banks in India would include the following elements:

Tier 1 Capital:

- Interest-free funds received from Head Office
- Statutory reserves kept in Indian books
- Remittable surplus retained in Indian books which is not repatriable so long as the bank functions in India
- Interest-free funds remitted from Head Office for acquisition of property

Tier 2 Capital:

- General provisions and loss reserves:
Reserves not attributable to the actual diminution in value or identifiable potential loss in any specific asset and are available to meet unexpected losses are included in Tier 2 capital subject to a maximum of 1.25 per cent of the total credit risk-weighted assets. Such provisions and reserves include General Provisions on Standard Assets', unhedged foreign currency provision, Provisions held for Country Exposures' and Investment Reserve Account'.

Quantitative Disclosures

(a)	Tier 1 Capital	(In Rs.000's)
	Amount Received from Head Office	8,394,130
	Statutory Reserves	5,013,675
	Remittable Surplus Retained in India for CRAR	3,617,952
	General Reserve	94,921
	Less : Intangible Assets	1,112,939
	Total Tier 1 Capital	16,007,739
(b)	Tier 2 Capital	(In Rs.000's)
	General Provisions	522,074
	Investment Reserve	32,092
	Country Risk Provisions	6,416
	Total Tier 2 Capital	560,582
(c)	Debt Capital Instruments Eligible for inclusion in Upper Tier 2 Capital	(In Rs.000's)
	Total Amount Outstanding	-
	of which amount raised during the current year	-
	Amount eligible to be reckoned as capital funds	-

(c) Subordinated Debt Eligible for inclusion in Lower Tier 2 Capital	(In Rs.000's)
Total amount outstanding	-
of which amount raised during the current year	-
Amount eligible to be reckoned as capital funds	-

(e) Other deduction from capital.
There are no other deductions from capital.

(f) Total Eligible Capital
The total eligible capital is Rs. 16,568,321 (thousand).

C. DF- 2: Capital Adequacy

Qualitative Disclosures

As part of the Bank's capital management program, sources and uses of capital are continuously assessed and monitored. The Bank deploys capital to support sustainable, long-term revenue and net income growth. Capital is managed using regulatory thresholds.

In managing the Bank's capital base, attention is paid to the cost and availability of the various types of capital, desired leverage, changes in the balance sheet and risk-weighted assets and the opportunities to profitably deploy capital. The amount of capital required for the business risks being assumed, and to meet regulatory requirements, is always balanced against the goal of generating an appropriate return.

The Bank's capital management framework includes a comprehensive Internal Capital Adequacy Assessment Process (ICAAP), aimed at ensuring that the Bank's capital is adequate to meet current and future risk. Key components of the Bank's ICAAP include sound corporate governance; establishing risk based capital targets; managing and monitoring capital, both currently and prospectively; and utilizing appropriate financial metrics which relate risk to capital. The ICAAP document is reviewed annually.

Quantitative Disclosures

(In Rs.000's)

(a) Capital Requirements for Credit Risk:	
Portfolios subject to Standardised Approach	5,313,171
Securitisation Exposures	-
(b) Capital Requirements for Market Risk: Standardised Duration Approach	
Interest Rate Risk	109,668
Foreign Exchange risk (including Gold)	88,031
Equity Risk	1,773
(c) Capital Requirements for Operational Risk:	
Basic Indicator Approach	864,296
Total Eligible Capital	16,568,321
Total Risk Weighted Assets	70,854,872
Total Capital Ratio	23.38%
Tier 1 Capital Ratio	22.59%

D. DF -3: Credit Risk : General Disclosures

Qualitative Disclosures

Credit risk is the risk of loss resulting from the failure of a borrower or counter party to honour its financial or contractual obligations to the bank. Credit risk arises in the Bank's direct lending operations, and in its funding, investment and trading activities where counterparties have repayment or other obligations to the Bank.

Credit risk management policies are developed by Global Risk Management in detail, among other things, the credit rating systems and associated parameter estimates as well as delegation of authority for granting credit, calculating the allowance for credit losses and authorizing write-offs. The credit risk rating systems support the determination of key credit risk parameter estimates which measure credit and transaction risk. They form an integral part of enterprise-wide policies and procedures encompassing governance, risk management and control structure. All significant credit requests are processed through the credit adjudication units of Global Risk Management for analysis and recommendation. Within the risk management framework, these credit units have defined authority levels appropriate to the size and risk of each transaction.

The decision-making process begins with an assessment of the credit risk of the individual borrower or counterparty. Key factors considered in the assessment include: the borrower's current and projected financial results and credit statistics; the industry in which the borrower operates; economic trends; geopolitical risk and the borrower's management. Based on this assessment, a risk rating is assigned to the individual borrower or counterparty, using the Bank's risk rating systems. A separate risk rating is also assigned at the facility level, taking into consideration additional factors, such as security, seniority of claim, structure, term and any other forms of credit risk mitigation that affect the amount of potential loss in the event of a default of the facility.

The Bank's credit risk rating systems are designed to support the determination of key credit risk parameter estimates which measure credit and transaction risk. These parameters are used in various internal and regulatory credit risk quantification calculations. The credit risk rating systems meet the objectives of transparency and replicability in order to provide consistency in terms of credit adjudication, minimum lending standards by risk ratings and reporting of credit risk. The internal risk ratings also determine the management level at which the facilities can be authorized or amended. Lower-rated credits require increasingly more senior management involvement, or Risk Policy Committee approval, depending on the aggregate exposure.

Global Risk Management is the final arbiter of internal risk ratings.

For recognition of past due and impaired loans and advances, the Bank follows guidelines prescribed by Reserve Bank of India as contained in circular DBOD.No.BP.BC.9/21.04.048/2015-16 dated July 01, 2015 on "Prudential norms on Income Recognition, Asset Classification and Provisioning pertaining to Advances" and other circulars/notifications issued by RBI during the course of the year in this regard.

Quantitative Disclosures

(a)	Gross Credit Risk Exposures	(In Rs.000's)
	Total Fund Based Credit Risk Exposure (<i>Note 1</i>)	119,944,135
	Total Non-Fund Based Credit Risk Exposure (<i>Note 2</i>)	15,219,577
	Total	135,163,712

Note 1: Amount represents funded exposure before credit risk mitigants.

Note 2: Amount represents non-funded exposure as per current exposure method and before credit risk mitigants.

(b) Geographic Distribution of Exposures (In Rs.000's)

	Fund Based	Non Fund Based
Overseas	-	-
Domestic	119,944,135	15,219,577
Total	119,944,135	15,219,577

(c) Industry Type Distribution of Exposures (In Rs.000's)

Type of Industry	Funded based Exposure			Non Fund Based Exposure
	Standard	NPA/NPI	Total	
Agriculture and Allied Activities	750,000	-	750,000	62,256
Cement and Cement Products	1,114,500	-	1,114,500	437,371
Chemicals and Chemical Products :Drugs and Pharmaceuticals	6,500,004	1,101,703	7,601,707	231,449
Chemicals and Chemical Products :Others	1,274,152	-	1,274,152	640,521
Computer Software	-	-	-	121,297
Energy : Electricity Generation - Private Sector	-	-	-	200,027
Food Processing : Others	250,000	-	250,000	4,202
Gems and Jewellery	58,909,124	-	58,909,124	405,072
Mining and Quarrying : Coal	-	-	-	43,915
NBFCs	13,290,000	-	13,290,000	-
Other Industries	4,725,251	-	4,725,251	3,515,371
Other infrastructure	2,500,000	264,005	2,764,005	-
Other Services : All Other services not classified elsewhere	503,422	-	503,422	-
Other Services : Banking and Finance other than NBFC's	3,319,553	-	3,319,553	7,135,707
Others industries	-	-	-	323,939
Petroleum (non-infra), Coal Products (non-mining) and Nuclear Fuels	5,399,802	-	5,399,802	300,235
Rubber, Plastic and their Products	3,061,350	-	3,061,350	511,560
Social & Commercial Infra : Post harvest storage infrastructure for agriculture and horticultural produce including cold storage	2,700,000	-	2,700,000	-
Telecommunication and Telecom Services	1,850,022	280,122	2,130,144	138,468
Textiles : Others	4,293,669	-	4,293,669	15,410
Vehicles, Vehicle Parts and Transport Equipment	1,500,000	1,900,000	3,400,000	25,382
Wholesale Trade (other than Food Procurement)	4,457,481	-	4,457,481	1,107,393
Total Exposure	116,398,330	3,545,830	119,944,160	15,219,575

d) Residual Contractual Maturity Breakdown of Assets

(In Rs.000's)

	1 Day	2-7 days	8-14 days	15-30 days	31 days – 2 month	Over 2 months to 3 months	Over 3 months to 6 months	Over 6 months to 3 years	Over 1 years to 3 years	Over 3 years to 5 years	Above 5 Y	TOTAL
Cash & Balances with RBI	276,803	381,664	430,167	652,578	312,707	232,470	215,062	68,391	125,497	5,373	53,841	2,754,553
Balances with Banks	587,689	-	-	-	-	-	2,301	75	1,405	-	-	591,470
Investments	21,332,154	1,967,401	2,217,424	3,363,910	1,611,942	1,198,338	1,108,605	352,540	646,910	27,697	291,554	34,118,475
Loans & Advances	307,139	6,221,814	2,243,595	9,190,125	2,605,283	6,828,445	12,749,737	7,251	147,599	31,500	397,406	40,729,894
Fixed Assets	-	-	-	-	-	-	-	-	-	-	65,991	65,991
Other Assets	619,519	33,342	560	5,706,053	2,144	2,583	48,635	83	1,695	362	1,694,649	8,109,625

(e) Amount of Gross NPAs (In Rs.000's)

Substandard	-
Doubtful 1	912,421
Doubtful 2	1,351,703
Doubtful 3	280,122
Loss	-
Gross NPA	2,544,246

(f) Net NPAs – Rs.310,799 (thousand)

(g) NPA Ratios

Gross NPAs to Gross Advances	5.92%
Net NPAs to Net Advances	0.76%

(h) Movement in NPAs (Gross) (In Rs.000's)

Opening Balance	3,550,387
Additions	2,295
Reductions	1,008,436
Closing Balance	2,544,246

(i) Movement of Provisions for NPAs (In Rs.000's)

Opening Balance	1,809,064
Provisions Made During the Period	1,432,820
Write-off	1,008,436
Write-back of Excess Provisions	-
Closing Balance	2,233,448

- (j) Amount of Non Performing Investments – Rs.69,008 (thousands)
- (k) Amount of Provisions Held for Non-performing Investments – Rs.55,003 (thousands)
- (l) Movement of Provisions for Depreciation on Investments (In Rs.000's)

Opening Balance	39,264
Provisions Made During the Period	15,739
Write-off	-
Write-back of Excess Provisions	-
Closing Balance	55,003

E. DF-4 : Credit Risk - Disclosures for Portfolios Subject to the Standardised Approach

Qualitative Disclosures

The Bank has adopted the standardized approach of the new Capital Adequacy Framework (NCAF) for computation of capital for credit risk with effect from March 31, 2008. The Bank has assigned risk weights to different classes of assets as prescribed by RBI.

As at March 31, 2017, the Bank has not considered external rating of claims of any borrower counterparty.

Quantitative Disclosures of exposure (In Rs.000's)

Below 100 % Risk Weight	105,059,935
100 % Risk Weight	29,376,604
More than 100 % Risk Weight	14,005
Deducted	-

F. DF-5: Credit Risk Mitigation - Disclosures for Standardised Approach

Qualitative Disclosures

The Bank's objective in securing collateral is to minimize losses and therefore is an important aspect of the Bank's credit risk mitigation strategy. Collateral refers to assets in which the Bank takes a legal interest in order to mitigate losses should a borrower counterparty default. The bank ensures that the taken collateral effectively mitigates substantial losses. The bank has ensured compliance with respect to the right to legally take control, liquidate or otherwise deal with collateral when required.

As at March 31, 2017, the Bank has recognized the following collateral as eligible credit risk mitigant:

- Cash (including bank's own fixed deposit receipts) on deposit with the Bank.

Cash as eligible financial collateral (FC) is readily realisable security and accordingly no limit has been prescribed to check concentration risk by the bank. Further, eligible cash as financial collateral is 0.10 % of total Risk Weighted Assets as at March 31, 2017.

Quantitative Disclosures

(a) For each separately disclosed credit risk portfolio the total exposure that is covered by eligible financial collateral after the application of haircuts:

(In Rs.000's)

Asset Class	Credit Risk Exposure	Eligible FC	Total amount of FC used	Net Amount of FC after Applicable haircut	Capital relief availed on account of FC
Loans	40,729,905	74,335	64,128	64,128	5,772
Letter of credit	277,191	-	-	-	-
Guarantees and Bonds	28,396,957	-	-	-	-

(b) The bank has not availed benefit of on or off balance sheet netting / guarantees / credit derivatives (wherever specifically permitted by RBI) as credit risk mitigant.

G. DF-6: Securitisation - Disclosure for Standardised Approach

The Bank does not have any securitization exposure.

H. DF-7: Market Risk in Trading Book

Qualitative Disclosures

Market risk is the risk of loss from changes in market prices and rates (including interest rates, credit spreads, equity prices, foreign exchange rates and commodity prices), the correlations among them, and their levels of volatility.

The following portfolios are covered for measuring Market Risk:

- Securities held under Available for Sale (AFS) category.
- Securities held under Held for Trading (HFT) category.
- Derivatives entered into for trading.
- Open foreign exchange and gold position limits.

The Board of Directors, (Head Office – Toronto, Canada) reviews and approves market risk policies and limits annually. The Bank's Liability Committee (LCO) and Market Risk Management and Policy Committee (MRMPC) oversee the application of the framework set by the Board and monitor the Bank's market risk exposures and the activities that give rise to these exposures. The MRMPC establishes specific operating policies and sets limits at the product, portfolio, business unit and business line levels and for the Bank in total. Limits are reviewed at least annually.

Global Risk Management provides independent oversight of all significant market risks, supporting the MRMPC and LCO with analysis, risk measurement, monitoring, reporting, proposals for standards and support for new product development. The Bank uses metrics and models to measure and control market risk exposures. The measurements used are selected based on an assessment of the nature of risks in a particular activity. The principal measurement techniques are Value at Risk (VaR) and Gap analysis.

To ensure compliance with policies and limits, market risk exposures are independently monitored on a continuing basis, either by Global Risk Management or by the back office.

Quantitative disclosures

The Capital Requirements for:	(In Rs.000's)
Interest Rate Risk	109,668
Equity Position Risk	1,773
Foreign Exchange Risk	88,031
Total	199,472

I. DF-8: Operational Risk

Qualitative disclosures

Operational risk is the risk of loss, whether direct or indirect, to which the Bank is exposed due to external events, human error, or the inadequacy or failure of processes, procedures, systems or controls. Operational risk, in some form, exists in each of the Bank's business and support activities and can result in financial loss, regulatory sanctions and damage to the Bank's reputation. Operational risk encompasses business process and change risk, technology failure, financial crime and legal and regulatory risk.

The governing principles and fundamental components of the Bank's operational risk management approach include:

- Accountability in the individual business lines for management and control of the significant operational risks to which they are exposed.
- A well-defined internal control procedure.
- An effective organization structure through which operational risk is managed, including:
 - A Board of Directors responsible for sound corporate governance.
 - Executive management who have clearly defined areas of responsibility.
 - Separation of duties between key functions.
 - An independent internal audit department responsible for verifying that significant risks are identified and assessed and for determining whether appropriate controls are in place to ensure that overall risks is at an acceptable level.
 - The Bank's business continuity management policies, which require that all business units develop business continuity capabilities for their respective functions. The Bank's Business Continuity Management Department at Head Office is responsible for governance and oversight of the Bank's business continuity and tracks, monitors and ensures compliance with these policies.
 - The Bank's training programs, such as the mandatory Anti-Money Laundering, Operational Risk and Information Security courses and examination which ensure employees are aware and equipped to safeguard our customers' and the Bank's assets.
 - Risk mitigation programs, which use insurance policies to transfer the risk of high severity losses e.g. cash, where feasible and appropriate.

Approach for Operational Risk Capital Assessment

As per RBI guidelines, the Bank has adopted Basic Indicator Approach (BIA) for assessing capital for Operational Risk. As per BIA, the capital requirement as on March 31, 2017, is Rs. 864,296 thousand (previous year Rs. 987,024 thousand).

J. DF-9:-Interest Rate Risk in the Banking Book (IRRBB)

Qualitative Disclosures

Interest Rate Risk in Banking Book (IRRBB) refers to the risk of loss in earnings or economic value of the Bank's Banking Book as a consequence of movement in interest rates. Interest rate risk arises from holding assets / liabilities and Off-Balance Sheet items with different principal amount, maturity dates or repricing dates thereby creating exposure to changes in levels of interest rates. The Bank actively manages its interest rate exposures with the objective of enhancing net interest income within established risk tolerances. Interest rate risk arising from the Bank's funding and investment activities is managed by local Asset Liability Committee (ALCO) in accordance with Board-approved policies (Head Office – Toronto, Canada) and allotted limits.

Interest rate exposure calculations are generally based on the earlier of contractual re-pricing or maturity of on-balance sheet and off-balance sheet assets and liabilities, although certain assets and liabilities such as deposits without a fixed maturity are assigned a maturity profile based on longevity of the exposure. Gap analysis is used to assess exposures and for planning purposes.

Quantitative Disclosures

As required under Pillar III norms, the increase / decline in earnings and economic value for an upward / downward rate shock of 200 basis points as on March 31, 2017, broken down by currency is as follows:

Earnings Perspective Currency	(In Rs.000's) Interest Rate Shock	
	2% Increase	2% Decrease
Rupees	47,789	(47,789)
US Dollar	(31,101)	31,101

K. DF-10 : General Disclosures for Exposures Related to Counterparty Credit Risk

Counterparty Credit Risk (CCR) limits are set within the context of established lending criteria and guidelines for individual borrowers, particular industries, and certain types of lending, to ensure the Bank does not have excessive concentration in any single borrower, or related group of borrowers, particular industry sector or geographic region. Bank ensures that applicable norms on exposure stipulated by RBI for both fund and no-fund based products are complied with. CCR limits are set on the amount and tenor while fixing the limits to respective counterparties with distinct limits for each type of exposure. The utilization against sanctioned limit is monitored regularly. Analysis of composition of the portfolio is presented to the Risk Management Committee on a quarterly basis.

Bank engages in collateralised borrowing from Reserve Bank of India and Clearing Corporation of India Ltd (CCIL) against Government of India securities/ Treasury Bills where, haircut is stipulated based on maturity of the instrument and does not depend on the credit rating of the borrower. Also the Bank does not deal in derivatives which, requires Bank to post additional collateral in case of a downgrade. Hence Bank's credit rating downgrade will not impact the collateralised borrowing operations.

Quantitative Disclosures

(In Rs.000's)

Particulars	As at March 31, 2017
Gross positive fair value of contracts	3,915,790
Netting benefits	-
Netted current credit exposure	3,915,790
Collateral held	-
Net derivatives current credit exposure	3,915,790
Potential Future Exposure (PFE)	5,010,595
Measures for exposure at default, or exposure amount, under CEM	8,926,385
Notional value of credit derivative hedges	-
Distribution of current credit exposure by types of credit exposure	
Current credit exposure-Interest Rates	1,448
Current credit exposure-Forex	3,914,342

L. Composition of capital

Table DF-11 : Composition of Capital				
Part II : Template to be used before March 31, 2017				
(i.e. during the transition period of Basel III regulatory adjustments)				
(In Rs. 000's)				
Basel III common disclosure template to be used during the transition of regulatory adjustments			Amounts Subject to Pre-Basel III Treatment	Ref No.
(i.e. from April 1, 2013 to December 31, 2017)				
Common Equity Tier 1 capital: instruments and reserves				
1	Directly issued qualifying common share capital plus related stock surplus (share premium) (Funds from Head Office)	8,394,130	-	(A)
2	Retained earnings	8,726,548	-	(B)
3	Accumulated other comprehensive income (and other reserves)		-	
4	Directly issued capital subject to phase out from CET1 (only applicable to non-joint stock companies)		-	
	Public sector capital injections grandfathered until January 1, 2018		-	

5	Common share capital issued by subsidiaries and held by third parties (amount allowed in group CET1)		-	
6	Common Equity Tier 1 capital before regulatory adjustments	17,120,678	-	
Common Equity Tier 1 capital : regulatory adjustments				
7	Prudential valuation adjustments	-	-	
8	Goodwill (net of related tax liability)	-	-	
9	Intangibles other than mortgage-servicing rights (net of related tax liability)	142,157	-	(C1+ D1)
10	Deferred tax assets	970,782	-	(C)
11	Cash-flow hedge reserve	-	-	
12	Shortfall of provisions to expected losses	-	-	
13	Securitisation gain on sale	-	-	
14	Gains and losses due to changes in own credit risk on fair valued liabilities	-	-	
15	Defined-benefit pension fund net assets	-	-	
16	Investments in own shares (if not already netted off paid-up capital on reported balance sheet)	-	-	
17	Reciprocal cross-holdings in common equity	-	-	
18	Investments in the capital of banking, financial and insurance entities that are outside the scope of regulatory consolidation, net of eligible short positions, where the bank does not own more than 10% of the issued share capital (amount above 10% threshold)	-	-	
19	Significant investments in the common stock of banking, financial and insurance entities that are outside the scope of regulatory consolidation, net of eligible short positions (amount above 10% threshold)	-	-	
20	Mortgage servicing rights(amount above 10% threshold)	-	-	

21	Deferred tax assets arising from temporary differences(amount above 10% threshold, net of related tax liability)	-	-	
22	Amount exceeding the 15% threshold	-	-	
23	of which : significant investments in the common stock of financial entities	-	-	
24	of which : mortgage servicing rights	-	-	
25	of which : deferred tax assets arising from temporary differences	-	-	
26	National specific regulatory adjustments (26a+26b+26c+26d)	-	-	
26b	of which : Investments in the equity capital of unconsolidated non-financial subsidiaries	-	-	
26c	of which : Shortfall in the equity capital of majority owned financial entities which have not been consolidated with the bank	-	-	
26d	of which : Unamortised pension funds expenditures	-	-	
	Regulatory Adjustments Applied to Common Equity Tier 1 in respect of Amounts Subject to Pre-Basel III Treatment	-	-	
	of which : [INSERT TYPE OF ADJUSTMENT] For example: filtering out of unrealised losses on AFS debt securities (not relevant in Indian context)	-	-	
	of which : [INSERT TYPE OF ADJUSTMENT]	-	-	
	of which : [INSERT TYPE OF ADJUSTMENT]	-	-	
27	Regulatory adjustments applied to Common Equity Tier 1 due to insufficient Additional Tier 1 and Tier 2 to cover deductions	-	-	
28	Total regulatory adjustments to Common equity Tier 1	1,112,939	-	
29	Common Equity Tier 1 capital (CET1)	16,007,739	-	
Additional Tier 1 capital : instruments				

30	Directly issued qualifying Additional Tier 1 instruments plus related stock surplus (share premium) (31+32)			-
31	of which : classified as equity under applicable accounting standards (Perpetual Non-Cumulative Preference Shares)	-		-
32	of which : classified as liabilities under applicable accounting standards (Perpetual debt Instruments)	-		-
33	Directly issued capital instruments subject to phase out from Additional Tier 1	-		-
34	Additional Tier 1 instruments (and CET1 instruments not included in row 5) issued by subsidiaries and held by third parties (amount allowed in group AT1)	-		-
35	of which : instruments issued by subsidiaries subject to phase out	-		-
36	Additional Tier 1 capital before regulatory adjustments	-		-
Additional Tier 1 capital: regulatory adjustments				
37	Investments in own Additional Tier 1 instruments	-		-
38	Reciprocal cross-holdings in Additional Tier 1 instruments	-		-
39	Investments in the capital of banking, financial and insurance entities that are outside the scope of regulatory consolidation, net of eligible short positions, where the bank does not own more than 10% of the issued common share capital of the entity (amount above 10% threshold)	-		-
40	Significant investments in the capital of banking, financial and insurance entities that are outside the scope of regulatory consolidation (net of eligible short positions)	-		-

41	National specific regulatory adjustments (41a+41b)	-	-	
41a	Investments in the Additional Tier 1 capital of unconsolidated insurance subsidiaries	-	-	
41b	Shortfall in the Additional Tier 1 capital of majority owned financial entities which have not been consolidated with the bank	-	-	
	Regulatory Adjustments Applied to Additional Tier 1 in respect of Amounts Subject to Pre-Basel III Treatment	-	-	
	of which : [INSERT TYPE OF ADJUSTMENT e.g. DTAs]	-	-	
	of which : [INSERT TYPE OF ADJUSTMENT e.g. existing adjustments which are deducted from Tier 1 at 50%]	-	-	
	of which : [INSERT TYPE OF ADJUSTMENT]	-	-	
42	Regulatory adjustments applied to Additional Tier 1 due to insufficient Tier 2 to cover deductions	-	-	
43	Total regulatory adjustments to Additional Tier 1 capital	-	-	
44	Additional Tier 1 capital (AT1)	-	-	
44a	Additional Tier 1 capital reckoned for capital adequacy	-	-	
45	Tier 1 capital (T1 = CET1 + Admissible AT1) (29 + 44a)	16,007,739	-	
Tier 2 capital : instruments and provisions				
46	Directly issued qualifying Tier 2 instruments plus related stock surplus	-	-	
47	Directly issued capital instruments subject to phase out from Tier 2	-	-	
48	Tier 2 instruments (and CET1 and AT1 instruments not included in rows 5 or 34) issued by subsidiaries and held by third parties (amount allowed in group Tier 2)	-	-	
49	of which : instruments issued by subsidiaries subject to phase out	-	-	

50	Provisions (Please refer to Note to Template Point 50)	560,582	-	(D)+(E)+(F)
51	Tier 2 capital before regulatory adjustments	560,582	-	
Tier 2 capital: regulatory adjustments				
52	Investments in own Tier 2 instruments	-	-	
53	Reciprocal cross-holdings in Tier 2 instruments	-	-	
54	Investments in the capital of banking, financial and insurance entities that are outside the scope of regulatory consolidation, net of eligible short positions, where the bank does not own more than 10% of the issued common share capital of the entity (amount above the 10% threshold)	-	-	
55	Significant investments ¹³ in the capital banking, financial and insurance entities that are outside the scope of regulatory consolidation (net of eligible short positions)	-	-	
56	National specific regulatory adjustments (56a+56b)	-	-	
56a	of which : Investments in the Tier 2 capital of unconsolidated insurance subsidiaries	-	-	
56b	of which : Shortfall in the Tier 2 capital of majority owned financial entities which have not been consolidated with the bank	-	-	
	Regulatory Adjustments Applied To Tier 2 in respect of Amounts Subject to Pre-Basel III Treatment	-	-	
	of which : [INSERT TYPE OF ADJUSTMENT e.g. existing adjustments which are deducted from Tier 2 at 50%]	-	-	
	of which : [INSERT TYPE OF ADJUSTMENT]	-	-	
57	Total regulatory adjustments to Tier 2 capital	-	-	
58	Tier 2 capital (T2)		-	

		560,582		
58a	Tier 2 capital reckoned for capital adequacy ¹⁴	560,582	-	
58b	Excess Additional Tier 1 capital reckoned as Tier 2 capital	-	-	
58c	Total Tier 2 capital admissible for capital adequacy (58a + 58b)	560,582	-	
59	Total capital (TC = T1 + Admissible T2) (45 + 58c)	16,568,321	-	
	Risk Weighted Assets in respect of Amounts Subject to Pre-Basel III Treatment	-	-	
	of which : [INSERT TYPE OF ADJUSTMENT]	-	-	
	of which : ...	-	-	
60	Total risk weighted assets (60a + 60b + 60c)	70,854,872	-	
60a	of which : total credit risk weighted assets	59,035,235	-	
60b	of which : total market risk weighted assets	2,216,352	-	
60c	of which : total operational risk weighted assets	9,603,285	-	
Capital ratios				
61	Common Equity Tier 1 (as a percentage of risk weighted assets)	22.59%	-	
62	Tier 1 (as a percentage of risk weighted assets)	22.59%	-	
63	Total capital (as a percentage of risk weighted assets)	23.38%	-	
64	Institution specific buffer requirement (minimum CET1 requirement plus capital conservation and countercyclical buffer requirements, expressed as a percentage of risk weighted assets)	-	-	
65	of which : capital conservation buffer requirement	-	-	
66	of which : bank specific countercyclical buffer requirement	-	-	
67	of which : G-SIB buffer requirement	-	-	

68	Common Equity Tier 1 available to meet buffers (as a percentage of risk weighted assets)	-	-	
National minima (if different from Basel III)				
69	National Common Equity Tier 1 minimum ratio (if different from Basel III minimum)	5.50%	-	
70	National Tier 1 minimum ratio (if different from Basel III minimum)	7.00%	-	
71	National total capital minimum ratio (if different from Basel III minimum)	9.00%	-	
Amounts below the thresholds for deduction (before risk weighting)				
72	Non-significant investments in the capital of other financial entities	-	-	
73	Significant investments in the common stock of financial entities	-	-	
74	Mortgage servicing rights (net of related tax liability)	-	-	
75	Deferred tax assets arising from temporary differences (net of related tax liability)	-	-	
Applicable caps on the inclusion of provisions in Tier 2				
76	Provisions eligible for inclusion in Tier 2 in respect of exposures subject to standardised approach (prior to application of cap)	528,490	-	
77	Cap on inclusion of provisions in Tier 2 under standardised approach	737,940	-	
78	Provisions eligible for inclusion in Tier 2 in respect of exposures subject to internal ratings-based approach (prior to application of cap)	N.A.	-	
79	Cap for inclusion of provisions in Tier 2 under internal ratings-based approach	N.A.	-	
Capital instruments subject to phase-out arrangements (only applicable between March 31, 2017 and March 31, 2022)				
80	Current cap on CET1 instruments subject to phase out arrangements	N.A.	-	

81	Amount excluded from CET1 due to cap (excess over cap after redemptions and maturities)	N.A.	-	
82	Current cap on AT1 instruments subject to phase out arrangements	N.A.	-	
83	Amount excluded from AT1 due to cap (excess over cap after redemptions and maturities)	N.A.	-	
84	Current cap on T2 instruments subject to phase out arrangements	N.A.	-	
85	Amount excluded from T2 due to cap (excess over cap after redemptions and maturities)	N.A.	-	

Note to the template		
Row No. of the template	Particular	In Rs.000's
10	Deferred tax assets associated with accumulated losses	-
	Deferred tax assets (excluding those associated with accumulated losses) net of Deferred tax liability	970,782
	Total as indicated in row 10	970,782
19	If investments in insurance subsidiaries are not deducted fully from capital and instead considered under 10% threshold for deduction, the resultant increase in the capital of bank	-
	of which : Increase in Common Equity Tier 1 capital	-
	of which : Increase in Additional Tier 1 capital	-
	of which : Increase in Tier 2 capital	-
26b	If investments in the equity capital of unconsolidated non-financial subsidiaries are not deducted and hence, risk weighted then :	-
(i)	Increase in Common Equity Tier 1 capital	-
(ii)	Increase in risk weighted assets	-
44a	Excess Additional Tier 1 capital not reckoned for	-

	capital adequacy (difference between Additional Tier 1 capital as reported in row 44 and admissible Additional Tier 1 capital as reported in 44a)	
	of which : Excess Additional Tier 1 capital which is considered as Tier 2 capital under row 58b	-
50	Eligible Provisions included in Tier 2 capital	528,490
	Eligible Revaluation Reserves included in Tier 2 capital	32,092
	Total of row 50	560,582
58a	Excess Tier 2 capital not reckoned for capital adequacy (difference between Tier 2 capital as reported in row 58 and T2 as reported in 58a)	-

DF-12: Composition of Capital-Reconciliation requirements

(In Rs.000's)

		Balance sheet as in published financial statements	Under regulatory scope of consolidation	
		As at March 31, 2017	As at March 31, 2017	
A	Capital & Liabilities			
	i.	Paid-up Capital (funds from HO)	8,394,130	8,394,130(A)
		Reserves & Surplus	8,642,850	8,642,850
		of which : Statutory reserve, reserve for CRAR and General reserve	8,726,548	8,726,548(B)
		of which investment reserve	32,092	32,092(D)
		of which current year loss	(115,790)	(115,790)(D1)
		Total Capital	17,036,980	17,036,980
	ii.	Deposits	41,401,322	41,401,322
		of which : Deposits from banks	7,008	7,008

	of which : Customer deposits	41,394,314	41,394,314
	of which : Other deposits (pl. specify)	-	-
iii.	Borrowings	22,596,680	22,596,680
	of which : From RBI	-	-
	of which : From banks	1,500,000	1,500,000
	of which : From other institutions & agencies	-	-
	of which : Others (pl. specify) (Borrowings outside India)	21,096,680	14,846,680
	of which Capital instruments	-	6,250,000
iv.	Other liabilities & provisions	5,335,026	5,335,026
	Of which Standard assets provision	522,074	522,074(E)
	Of which Standard Country risk provision	6,416	6,416(F)
Total		86,370,008	86,370,008

Assets				
B	i.	Cash and balances with Reserve Bank of India	2,754,553	2,754,553
		Balance with banks and money at call and short notice	591,470	591,470
	ii.	Investments :	34,118,475	34,118,475
		of which : Government securities	34,104,470	34,104,470
		of which : Other approved securities	-	-
		of which : Shares	14,005	14,005
		of which : Debentures & Bonds	-	-
		of which : Subsidiaries / Joint Ventures / Associates	-	-
		of which : Others (Commercial Papers, Mutual Funds etc.)	-	-
	iii.	Loans and advances	40,729,894	40,729,894
		of which : Loans and advances to banks	-	-
		of which : Loans and advances to customers		

		40,729,894	40,729,894
iv.	Fixed assets	65,991	65,991
	of which : intangible assets	26,367	26,367 (C1)
v.	Other assets	8,109,625	8,109,625
	of which : Goodwill and intangible assets	-	-
	of which : Goodwill	-	-
	of which : Intangible assets	-	-
	Deferred tax assets	970,782	970,782(C)
vi.	Goodwill on consolidation	-	-
vii.	Debit balance in Profit & Loss account	-	-
Total Assets		86,370,008	86,370,008

M. Equities – Disclosure for Banking Book Positions

The bank has no equity investment in banking books as of March 31, 2017.

N. Leverage Ratio

The Basel III leverage ratio is defined as the capital measure (Tier-1 capital of the risk based capital framework) divided by the exposure measure, with this ratio expressed as a percentage. As per RBI guidelines, disclosures required for leverage ratio for the Bank at the consolidated level at March 31, 2017 is as follows.

a) Table DF 17- Summary comparison of accounting assets vs. leverage ratio exposure measure

Sr. No.	Particulars	In Rs.000's
1	Total consolidated assets as per published financial statements	86,370,008
2	Adjustment for investments in banking, financial, insurance or commercial entities that are consolidated for accounting purposes but outside the scope of regulatory consolidation	-
3	Adjustment for fiduciary assets recognised on the balance sheet pursuant to the operative accounting framework but excluded from the leverage ratio exposure measure	-
4	Adjustments for derivative financial instruments	4,482,020
5	Adjustment for securities financing transactions (i.e. repos and similar secured lending)	-
6	Adjustment for off-balance sheet items (i.e. conversion to credit equivalent amounts of off- balance sheet exposures)	41,323,515
7	Other adjustments	(1,112,938)
8	Leverage ratio exposure	131,062,605

b) Table DF-18: Leverage ratio common disclosure template

(In Rs.000's)

On-balance sheet exposures		
1	On-balance sheet items (excluding derivatives and SFTs, but including collateral)	82,796,888
2	(Asset amounts deducted in determining Basel III Tier 1 capital)	(1,112,938)
3	Total on-balance sheet exposures (excluding derivatives and SFTs) (sum of lines 1 and 2)	81,683,950
Derivative exposures		
4	Replacement cost associated with all derivatives transactions (i.e. net of eligible cash variation margin)	3,573,120
5	Add-on amounts for PFE associated with all derivatives transactions	4,482,020
6	Gross-up for derivatives collateral provided where deducted from the balance sheet assets pursuant to the operative accounting framework	-
7	(Deductions of receivables assets for cash variation margin provided in derivatives transactions)	-
8	(Exempted CCP leg of client-cleared trade exposures)	-
9	Adjusted effective notional amount of written credit derivatives	-
10	(Adjusted effective notional offsets and add-on deductions for written credit derivatives)	-
11	Total derivative exposures (sum of lines 4 to 10)	8,055,140
Securities financing transaction exposures		
12	Gross SFT assets (with no recognition of netting), after adjusting for sale accounting transactions	-
13	(Netted amounts of cash payables and cash receivables of gross SFT assets)	-
14	CCR exposure for SFT assets	-
15	Agent transaction exposures	-
16	Total securities financing transaction exposures (sum of lines 12 to 15)	-
Other off-balance sheet exposures		
17	Off-balance sheet exposure at gross notional amount	134,886,730
18	(Adjustments for conversion to credit equivalent amounts)	(93,563,215)
19	Off-balance sheet items (sum of lines 17 and 18)	41,323,515
Capital and total exposures		
20	Tier 1 capital	16,007,739
21	Total exposures (sum of lines 3, 11, 16 and 19)	131,062,605
Leverage ratio		
22	Basel III leverage ratio	12.21%